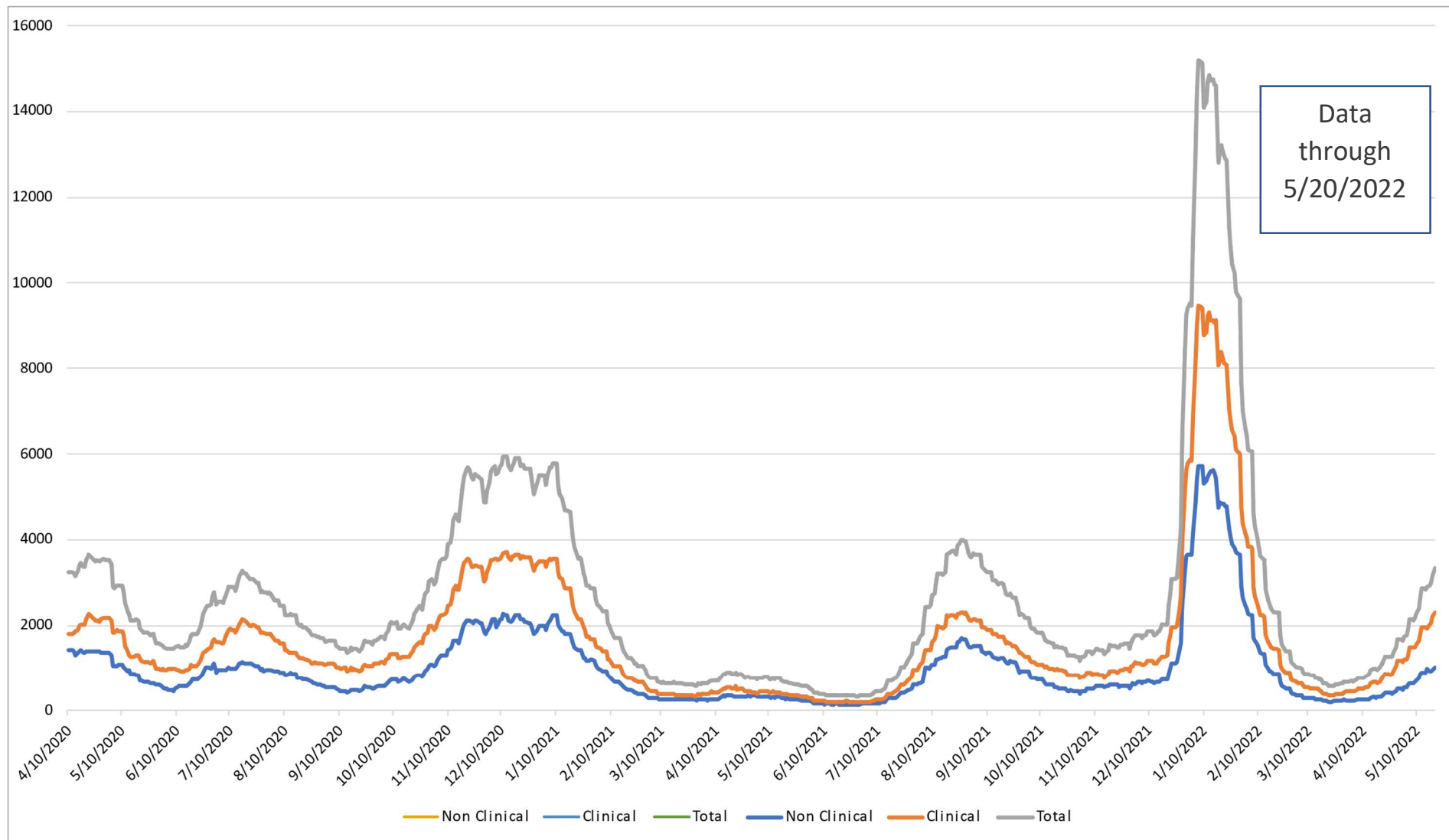


Data as of midnight May 23, 2022



Department of Veterans Affairs Employee Unable to Work data are self-reported by VA medical centers and aggregated at the national level in this report. The vertical axis is the daily sum of employees unable to work due to COVID-19 (both for symptomatic or asymptomatic infection whether suspected or confirmed by testing).

**Clinical** – Employee who treats patients or provides direct patient care, of any type.

**Non-Clinical** – Employee who may support patient care, but their work does not provide direct diagnosis, treatment, nor care for the patient.